

LOCATING PLASTIC AND METALLIC PIPES ACOUSTICALLY



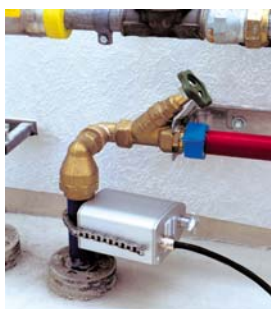
Plastic and fibre cement pipes are not electrically conductive, they cannot be located with traditional Cable Avoidance Tools or the Sewerin ELH6 which all work on the principal of detection of electromagnetic fields. The Combiphon can trace these liquid filled pipes by acoustics.

THE STOPPER FOR DISTRIBUTION PIPES



- The "Stopper" is a battery powered intensity controlled piston. It is attached to a hydrant standpipe.
- When the hydrant is opened the piston alternatively restricts and widens the water outlet. The water column in the pipe is consequently set in motion producing an unmistakable "heartbeat" sound which can be detected on the surface with the ground microphone Aquaphon A100
- The intensity of the "heartbeat" is controlled by an adjuster. In situations where there are competing sounds and you wish to turn the unit off to ensure that you are listening to the "heartbeat" there is a remote control which allows for single man operation.
- Due to the unique design of the piston the back pressure is minimum so damage to the pipe and house service fittings is unforeseen and has never been known to occur
- An advantage in using an electrically controlled piston, as opposed to a spring one, is that changes in water pressure caused by user draw off or a change in pressure have no effect on the settings.

KNOCKER FOR SERVICE PIPES WATER OR GAS



- On smaller pipes such as house service lines the "Knocker" is used
- It attaches around the pipe (up to 100mm) with an adjustable chain and "taps" on the pipe wall and the resulting sound is heard on the surface with the ground microphone.
- Frequency and intensity can be adjusted via remote control where for example near walls less intensity is preferable

TECHNICAL DATA

Power supply:	Lead acid rechargeable battery 12 V car cigarette lighter lead or mains adaptor
Operating time:	with the Knocker, between 5 – 80 hrs
Operating temperature:	-10 °C ... +50 °C
Protection class:	IP 54
Case Dimensions	(W x H x D): 60 x 19 x 21 cm (with compartment for knocker)