



**SEWERIN**

Wir sichern Lebensqualität.

# Leakplotter



***The intelligent network patrol***

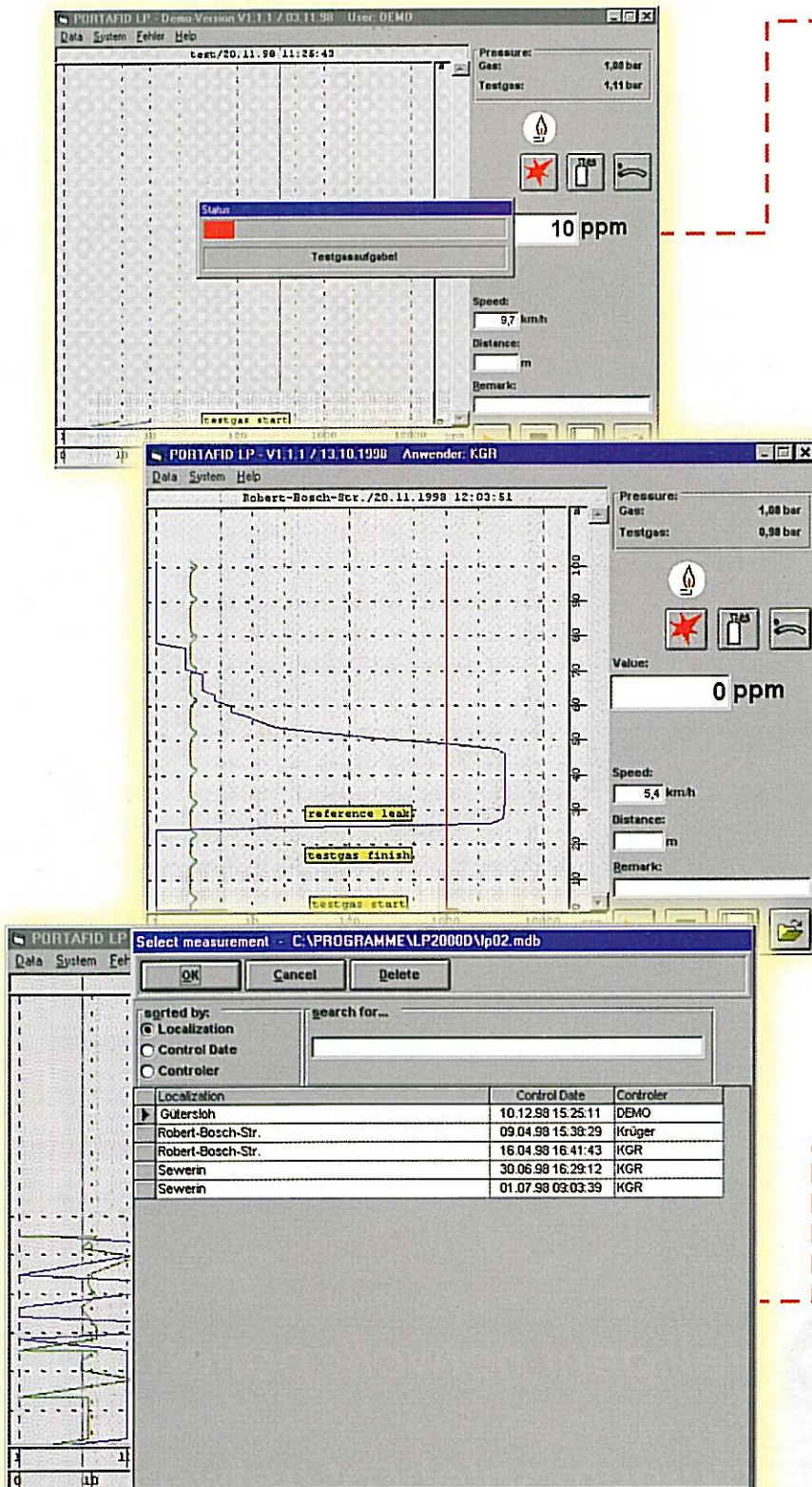
***for maximum safety of networks***

## The principal

The **Leakplotter** is a vehicle conception which complies with the requirements for an economic survey in pipe distribution networks by driving above a buried gas pipeline.

The total system is designed in a modular way, and therefore practically every type of base vehicle is suitable for this purpose.

Light gases escape from a leak – funnel-shaped – within the ground and diffund through the surface as well. While driving above the gas pipes a sample is taken and passed on to the measuring insert. As a result leakages within the spreading funnel are being indicated and recorded by the notebook.



## System control

- Automatic survey of connection to measuring insert
- Permanent survey of pump flow and flame status of the FID
- Permanent survey and display of pressure inside the fuel- and test-gas bottle
- Automatic zero-point adjustment
- Automatic first ignition
- Manual ignition after "flame out" signal due to high gas concentration

## Data collection

- Permanent record of actual speed and concentration
- Display of all relevant data on the main screen such as speed, concentration and alarm level
- Comments can be entered directly during the measurement
- Actual measured concentration displayed permanently

## Data archive

- The viewer mode allows comparing different measurements taken
- Recorded data are stored in a data base for subsequent treatment
- Identification of measurements by location, date and controler
- Suitable sorting to be selected
- Search function is implemented

# Components

## Measuring insert

- Flame-Ionisation-Detector (FID), selective for detection of hydrocarbon gases
- Oxidiser to eliminate disturbances caused by environmental pollution or humidity
- 40% hydrogen / 60% nitrogen fuel gas and 10 ppm methane / synth. air test gas bottles
- Bypass and water-separator for probe inlet
- Remote operation in case of PC breakdown
- Mounted into 19" rack, installed in the vehicle



## Suction unit

- Suction beam with 8 bells inclusive hose connection
- Dust filters in every bell to avoid damage to the FID unit
- Additional hose filters
- Adjustable in height
- Mounted at bumper of the measuring vehicle
- Two sections to fit into the vehicle without wasting useful space



## PC control unit

- Notebook meeting the latest state of the art to control all features of the system
- Mounted on special pick-up system fixed on the base of the vehicle
- Notebook cover can be locked to prevent theft
- Adjustable in height and to be turned for an optimal view at the screen



# Technical data

## SEWERIN

### Measuring vehicle

In general almost every car can be upgraded to become a **Leakplotter**, but most of them cause problems in every day use in the towns due to their size.

With the new SMART these problems are solved. Because of a length of only 2.50 metres and a width of 1.51 metres this car is able to pass even smallest roads, even driving on the pavements is possible.

The smart is available with two different engines:

- 600 ccm 33kW gasoline or
- 600 ccm 40 kW gasoline

A large range of features is already contained in the basic equipment. Even more are available as accessories. For further information please refer to the leaflet issued about this car.

### Measuring insert

- 19" rack, carrying all components, mounted on the vehicle meeting customers requirements
- Primary Pump:
  - 12 V operated
  - 1800 l/h flow
- Standby-pump:
  - 12 V operated
  - 80l/h flow
  - bypass system to take probe out of primary flow
- FID unit:
  - sensitivity: 1 ppm methane
  - response time: < 5 sec.
  - linear concentration related signal
- Display and keyboard:
  - large, illuminated LCD display
  - remote control in case of PC breakdown

### Probe system

- Suction beam of two joints, connected with quick-coupling
- 8 rubber bells with probe filters and hose connection to the beam
- Non corrosive mounting to vehicles bumper, adjustable in height
- Plastic hose with additional filters and water-separator, connected to measuring insert

### Notebook / Printer

- Meeting the latest state of the art. Please ask for the actual type of Notebook in case of interest in placing an order with us.
- In case you decide to use your own PC please contact us in order to check the recommendable system requirements. The software and a total system check will be carried out after mounting of all components.
- The printer will as well be meeting the latest state of the art